

Tronçonneuse électrique

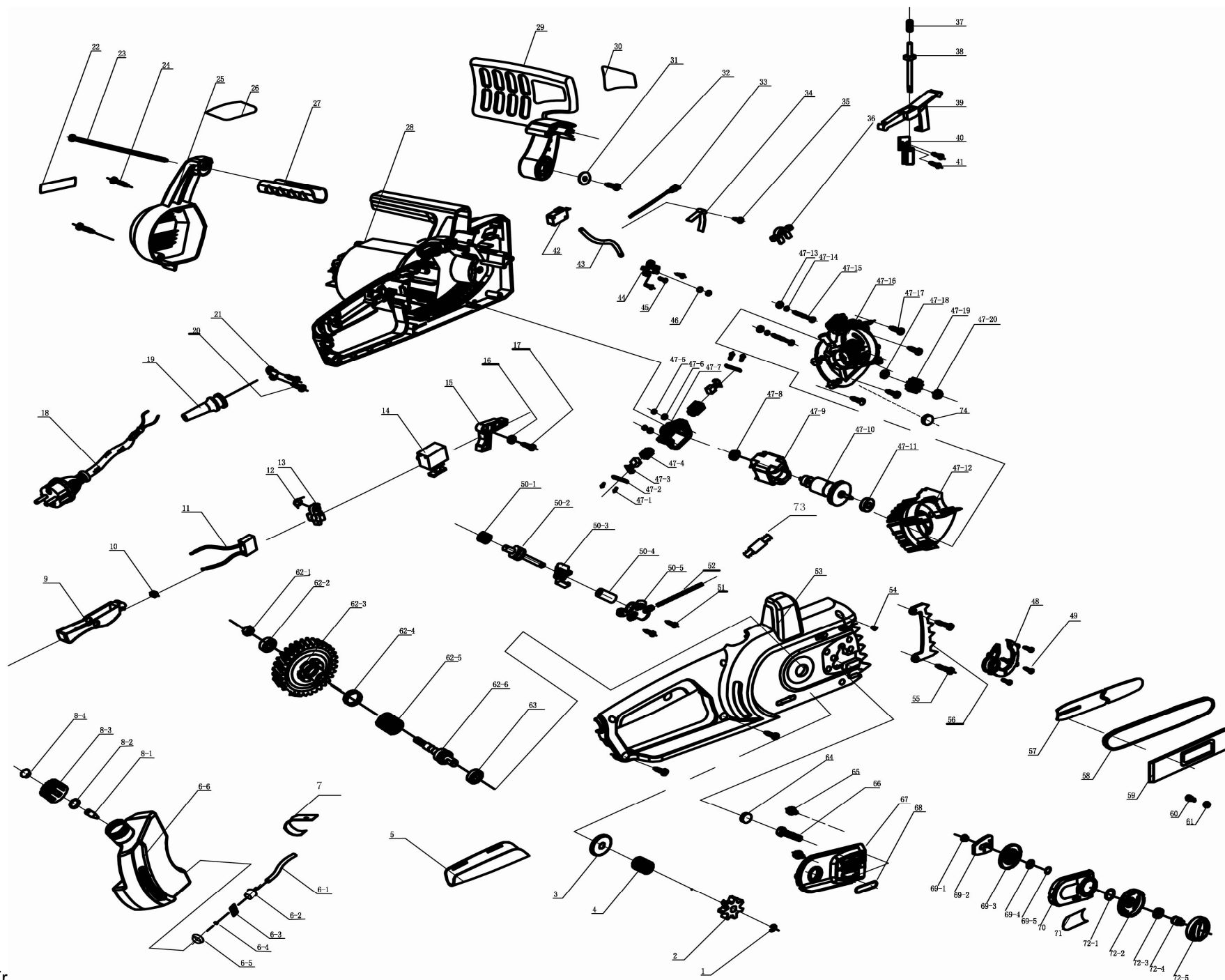


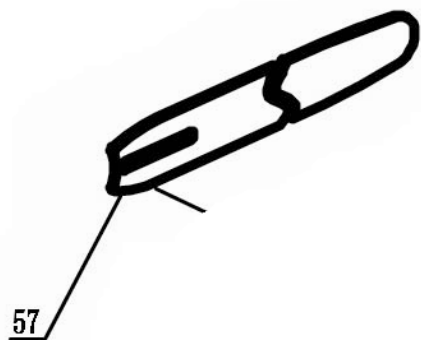
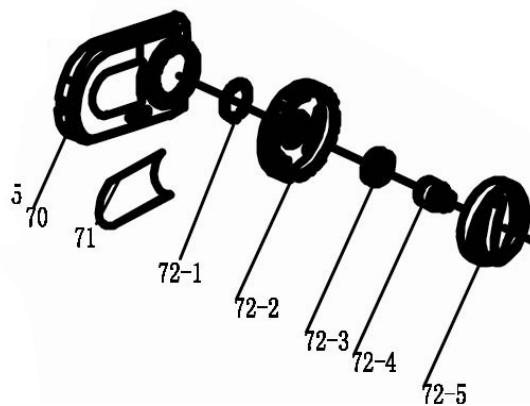
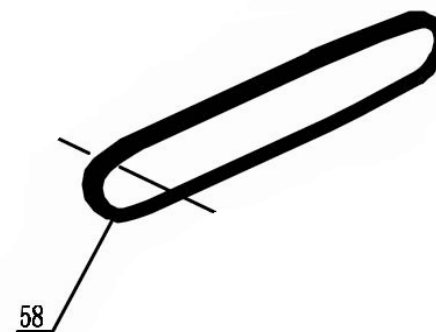
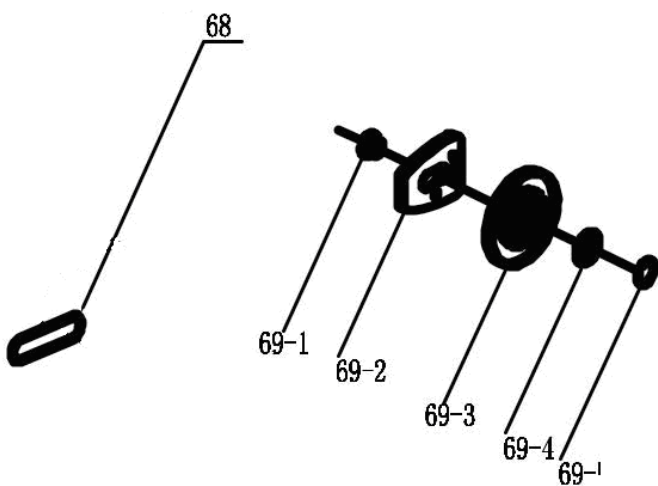
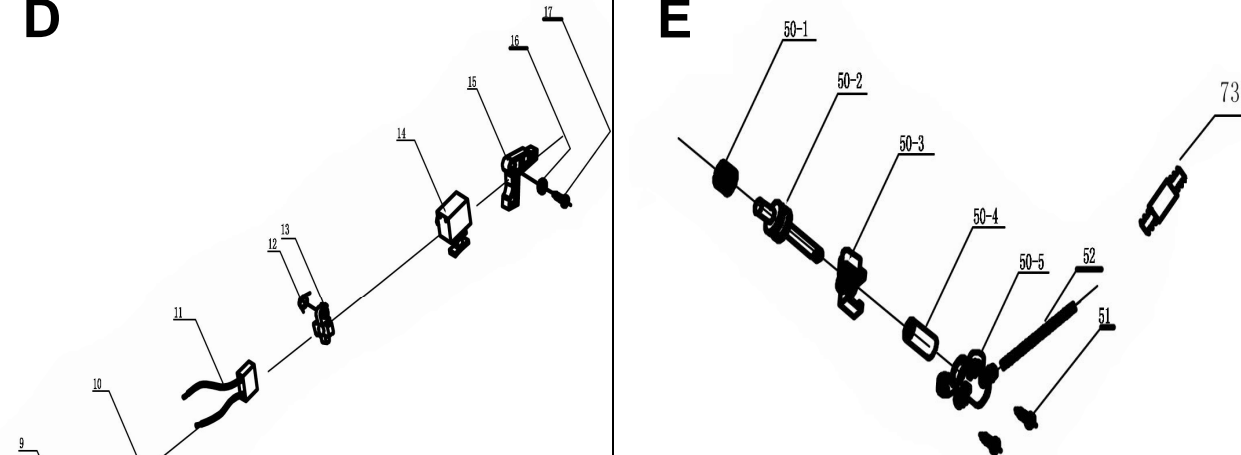
**SANLI**

CE2200-45  
[www.sanli.fr](http://www.sanli.fr)

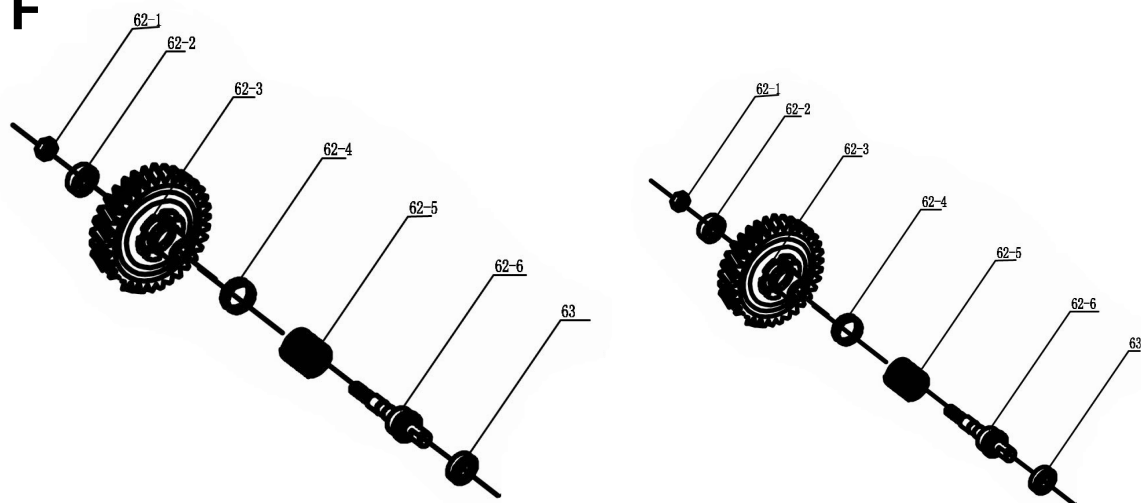


## Manuel Pièces de Rechange

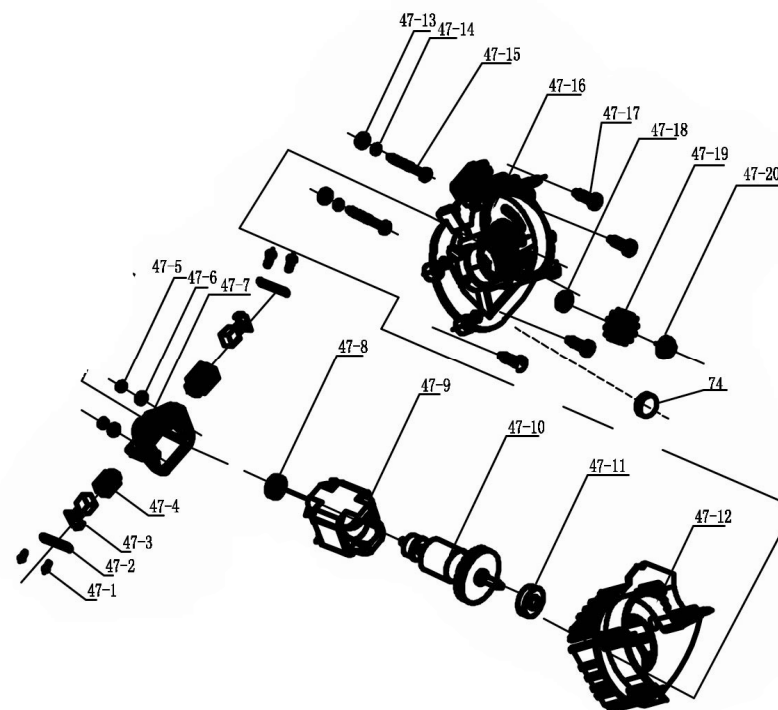


**A****B****C****D****E**

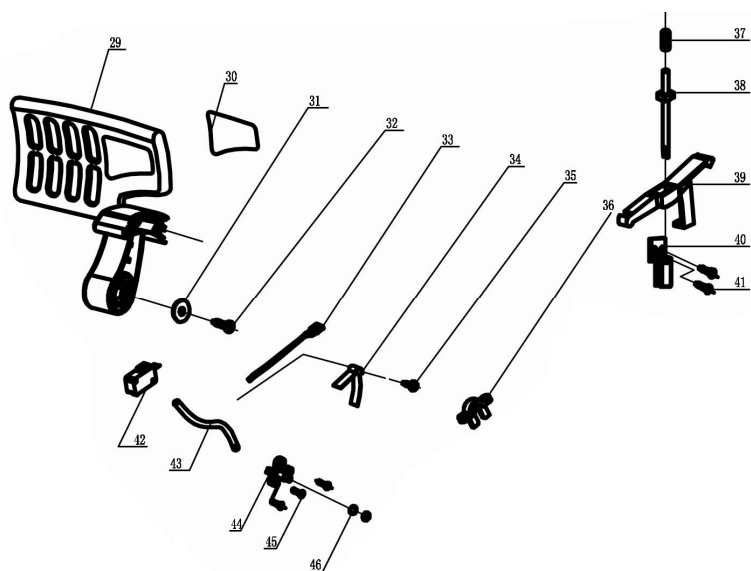
**F**



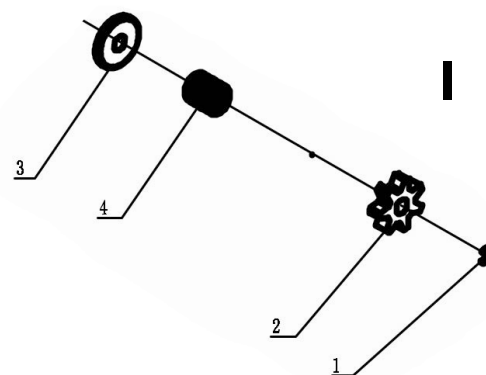
**G**



**H**



**I**



| <b>Rep/N°</b> | <b>Réf Sanli</b> | <b>Gencod</b> | <b>Libellé</b>                      |
|---------------|------------------|---------------|-------------------------------------|
| <b>A</b>      | <b>1599</b>      | 3700554615992 | Guide OREGON 18"avec système SDS    |
| <b>B</b>      | <b>1600</b>      | 3700554616005 | Couvercle droit complet système SDS |
| <b>C</b>      | <b>1601</b>      | 3700554616012 | Chaîne OREGON 18" 91PJ062X          |
| <b>D</b>      | <b>1602</b>      | 3700554616029 | Kit gâchette complet                |
| <b>E</b>      | <b>1603</b>      | 3700554616036 | Pompe à huile complète              |
| <b>F</b>      | <b>1604</b>      | 3700554616043 | Kit pignon complet                  |
| <b>G</b>      | <b>1605</b>      | 3700554616050 | Moteur électrique complet           |
| <b>H</b>      | <b>1606</b>      | 3700554616067 | Kit levier de sécurité complet      |
|               | <b>1647</b>      | 3700554616470 | Bouchon huile de chaîne             |
| <b>I</b>      | <b>1870</b>      | 3700554618702 | Kit pignon de chaîne                |